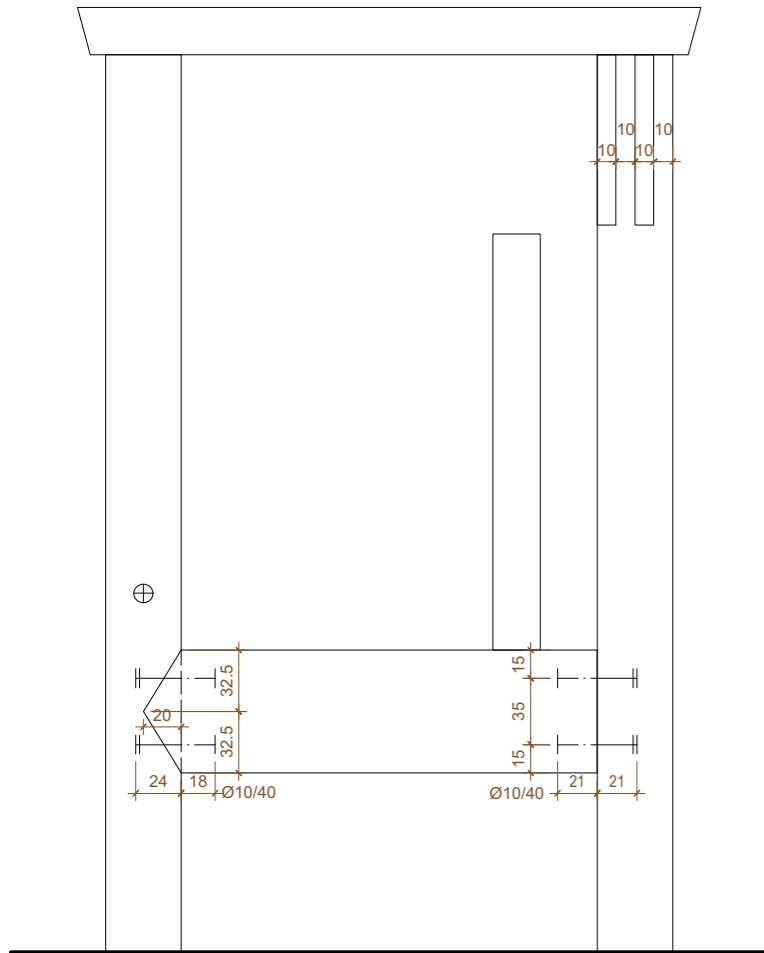
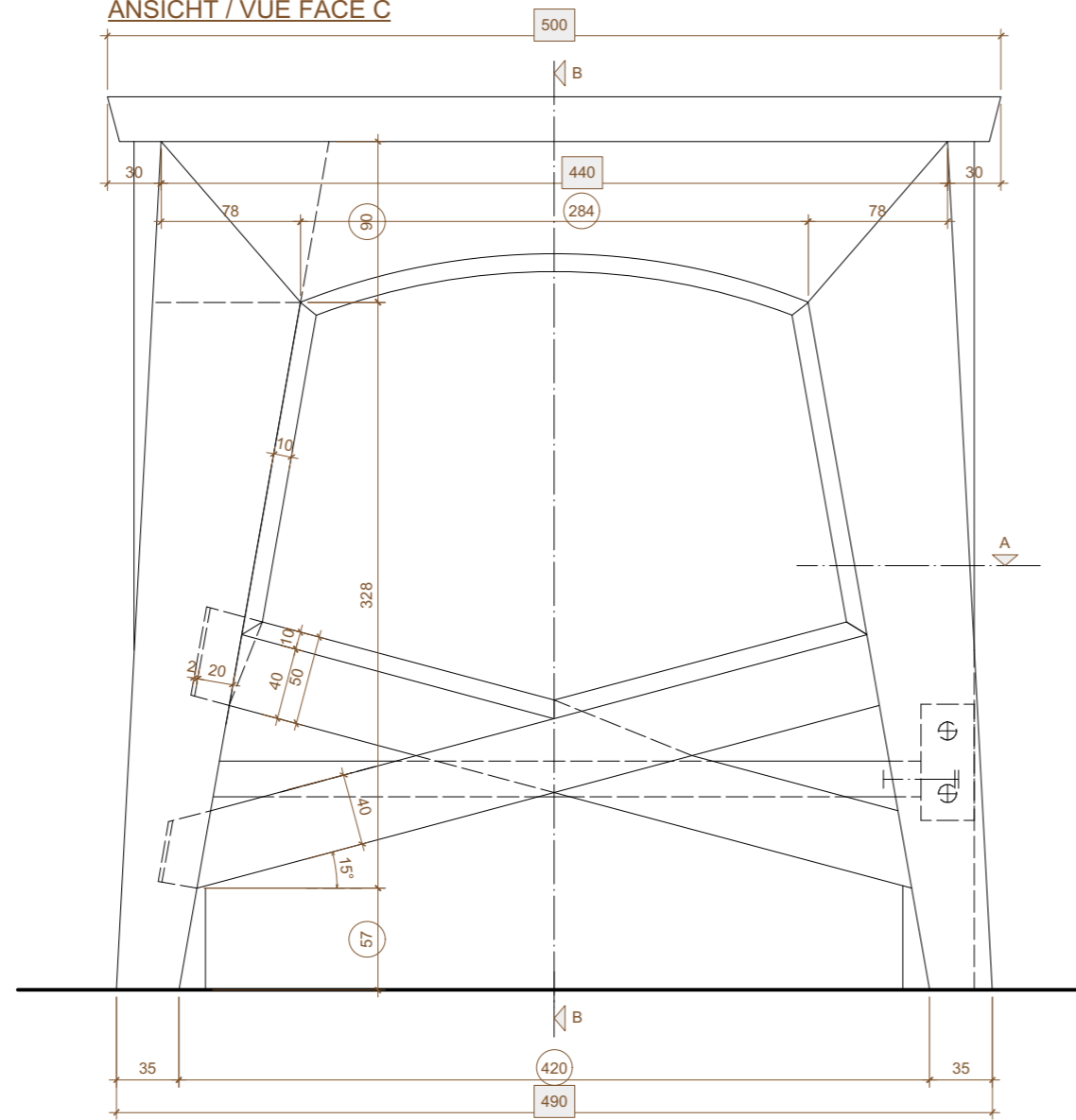


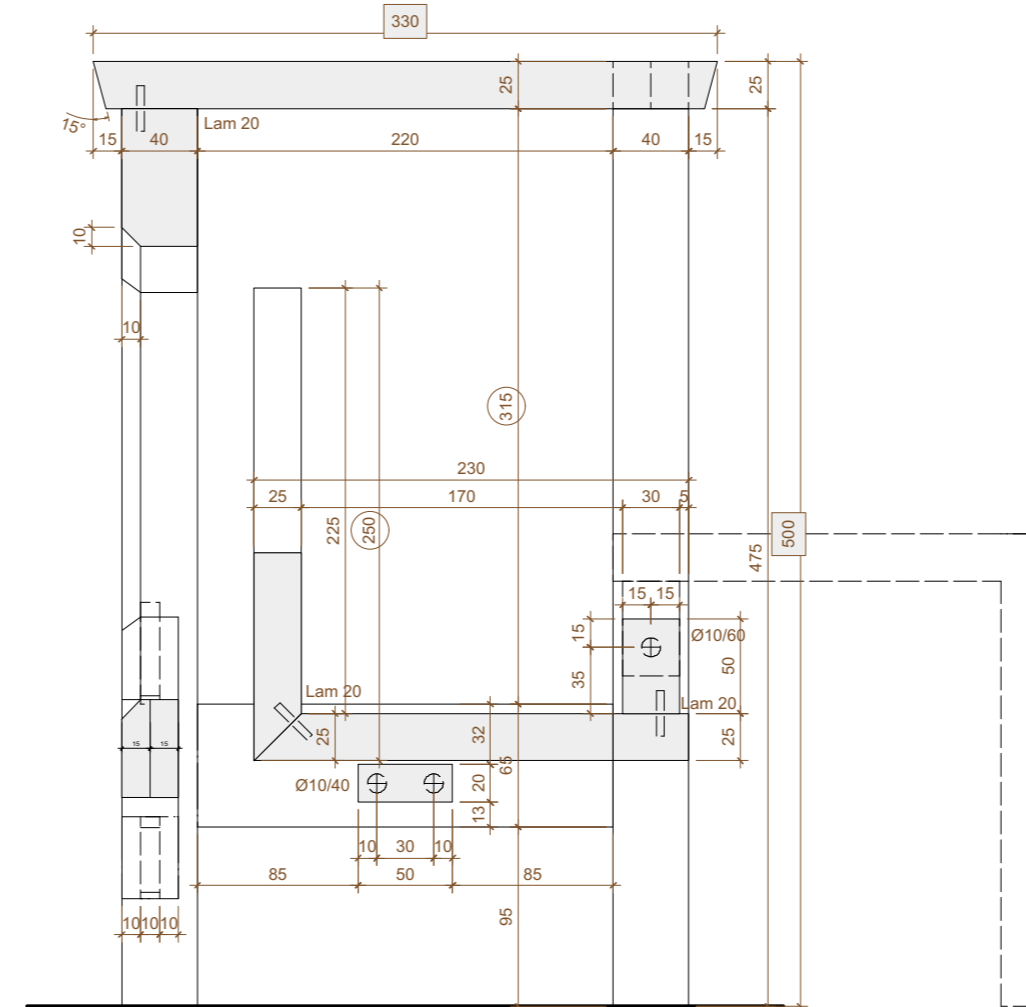
ANSICHT / VUE FACE D



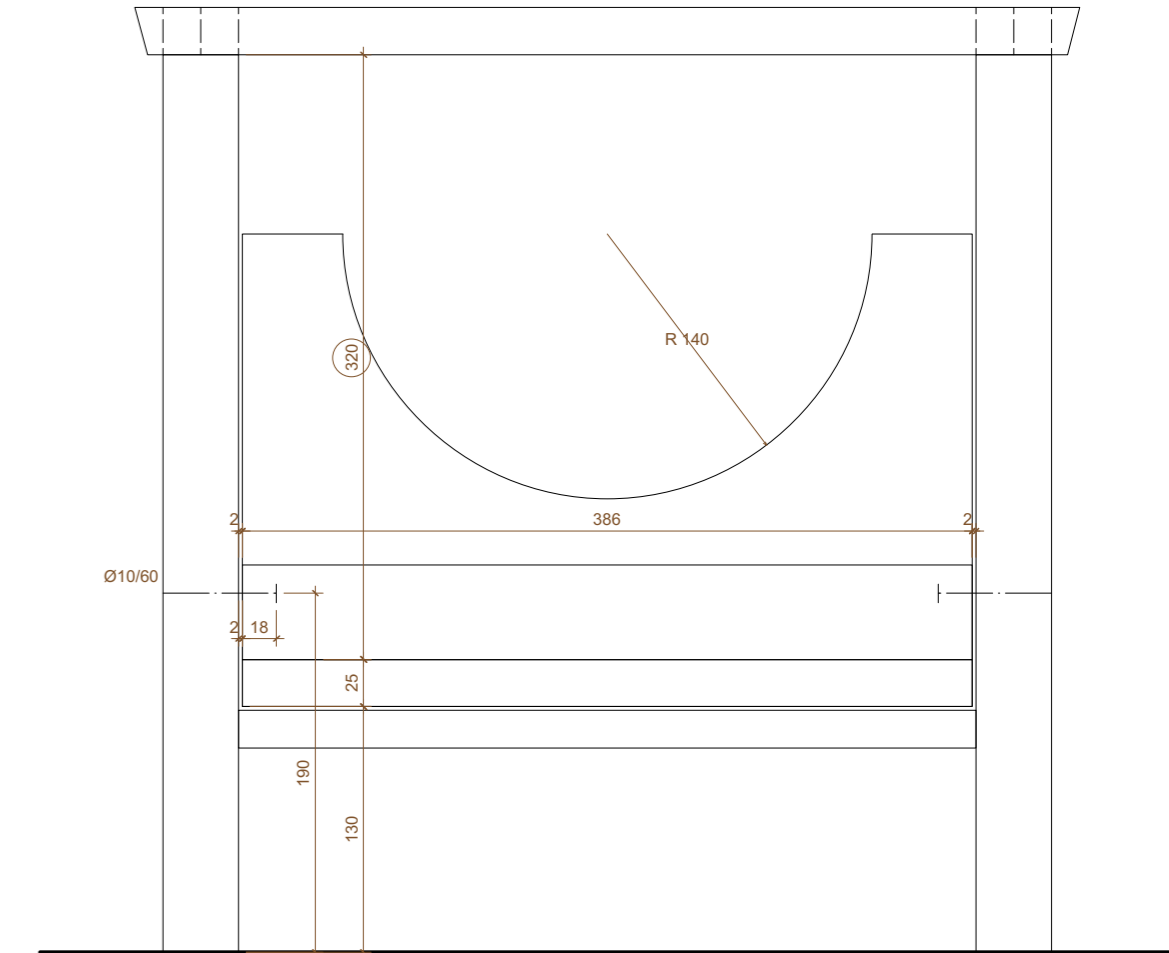
ANSICHT / VUE FACE C



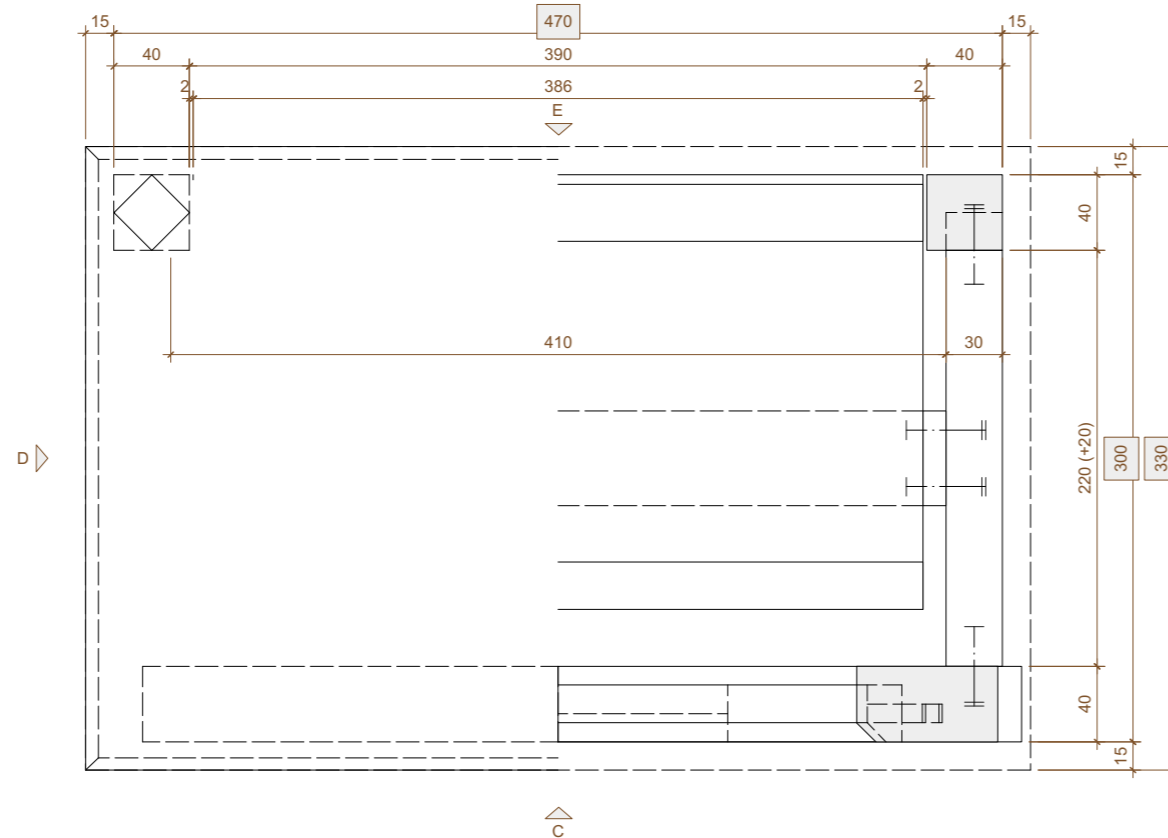
SCHNITT / COUPE B-B



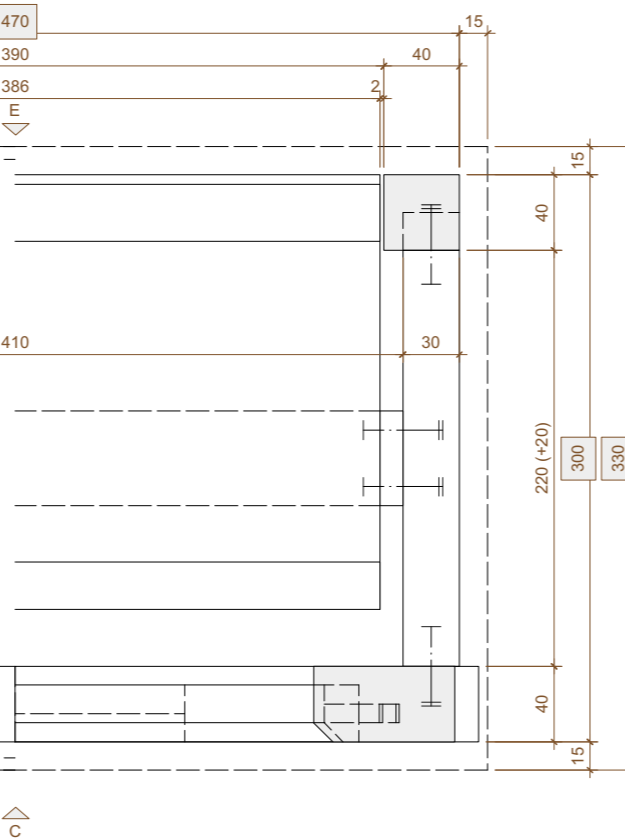
ANSICHT / VUE FACE E




DRAUFSICHT / VUE DESSUS



SCHNITT / COUPE A



- Dübel / Tourillon
12 x Ø10/40
2 x Ø10/60
- Lamelle
8 x Nr. 20
- Puffer / Butoir
2 x 2mm

	Bezeichnung/Projektname: Treppentritt / stair occurs / escabeau		
	Plannamen: Schweizermeisterschaft 2018		Auftrag Nr.:
	Bauherr: VSSM Gladbachstrasse 80 8044 Zürich	Mst: 1:4	Format: A2
	Dat: 28.08.2018	Gez:	th